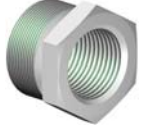


Bushings

	<b>19.050038N</b>	<b>19.075</b>	<b>19.100062</b>
	G 1/2 to NPT 3/8	3/4 to 1/2	1 to 5/8



	<b>19.100A</b>	<b>19.100B</b>	<b>19.125</b>	<b>19.150A</b>
	1 to 1/2	1 to 3/4	1 1/4 to 1	1 1/2 to 1

Extensions



	<b>C210</b>	<b>C211</b>	<b>19.050075</b>	<b>C 217</b>	<b>C 213</b>	<b>19.100125</b>
	1/4 to 3/8	1/4 to 1/2	1/2 to 3/4	1/2 to 1	3/4 to 1	1 to 1 1/4



	<b>C 214</b>	<b>C 215</b>
	1 to 1 1/2	1 1/4 to 1 1/2

Swivel joints

Rust proof, sturdy execution, smooth operation, with excellent flow dynamic, suitable for larger channel cleaning and for operating cutters.

	<b>24.050</b>	<b>24.075</b>	<b>24.100</b>	<b>24.125S</b>	<b>24.125</b>	<b>24.150</b>
	1/2	3/4	1	1 male 1 1/4 female	1 1/4	1 1/2
	—	—	—	3 × M10	—	—
$\varnothing \times L$	1.6 × 3.1	2.32 × 2.91	2.3 × 3.7	2.95 × 3.38	3.11 × 3.26	3.30 × 3.78
	1.16	2.67	4.89	5.33	4.89	6.00
	3,625	3,625	3,625	3,625	3,625	3,625

	Connecting thread [inch]	L	Length [ft.]		Maximum pressure [psi]
	Thrust jet		gpm		
$\varnothing \times L$	Measures [inch]		Weight [lb.]		

